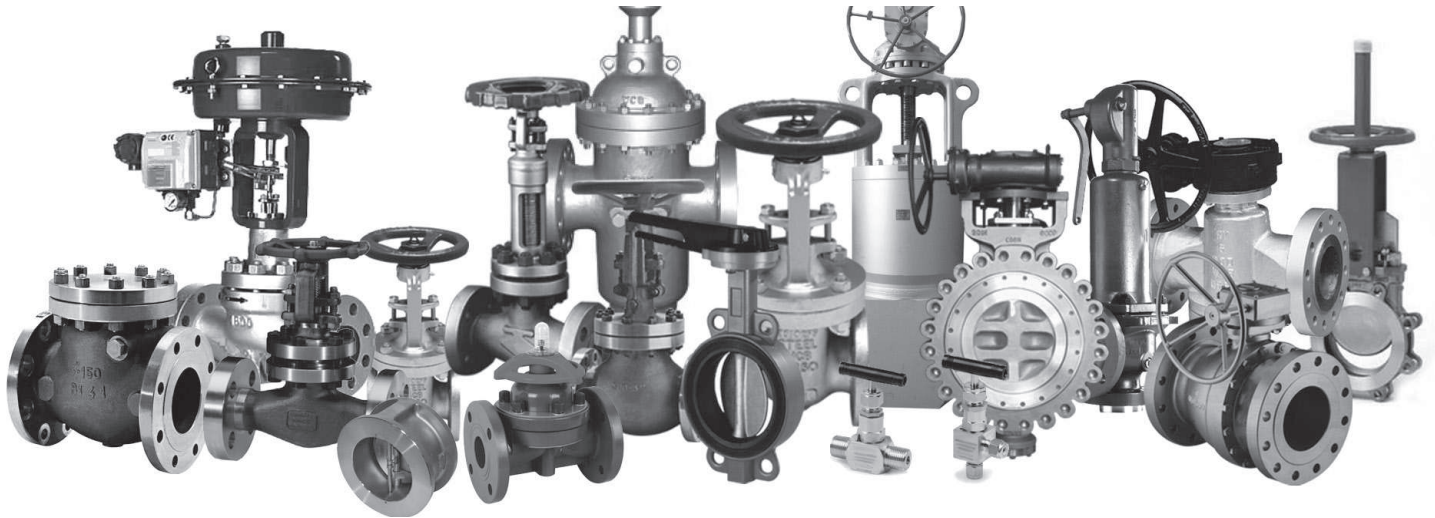


NEC

The Best Desinged Solutions



VALVES

FLOW MANAGEMENT SOLUTIONS Division

Standard Service | Critical Application | High Quality VALVES



DIN/EN Casted valves

- = **Type:** Gate, Globe, Check, Butterfly, Ball, Bellow, Self regulated valves, (+).
- = **Sizes:** From DN15 to DN1200.
- = **Pressure:** From PN10 to PN64.
- = **Ends:** Flanged, welded, threaded, wafer, lug, etc.
- = **Materials:** Cast iron, stainless steel, brass, (+).
- = **Optional:** Soft sealing valves (EPDM, NBR, etc.).
- = **Applications:** Water treatment and filtration, power generation, industry, marine, energy, etc.



ANSI Casted valves

- = **Type:** Gate, Globe, Check, Butterfly, Ball, Bellow (+).
- = **Sizes:** From 1/2" to 72".
- = **Class:** From 150# to 2.500#.
- = **Ends:** Flanged, welded and threaded.
- = **Materials:** Carbon steel, stainless steel, alloy steel, (+).
- = **Applications:** Chemical, petro-chemical, refining, oil & gas, water, power generation, marine, etc.



Forged valves

- = **Type:** Gate, Globe and Check, Bellow.
- = **Sizes:** From 1/4" to 8".
- = **Class:** From 800# to 4.500#.
- = **Construction:** ASME B16.34, BS 5352, API 602.
- = **Ends:** Flanged, socket weld, butt weld, threaded.
- = **Materials:** Carbon steel, stainless steel, alloy steel, (+).
- = **Special options:** Fully welded, extended body, extended bonnet, (+).
- = **Applications:** Petroleum refining and production, offshore, oil & gas, power industry, fertilizer, chemical and desalination, etc.



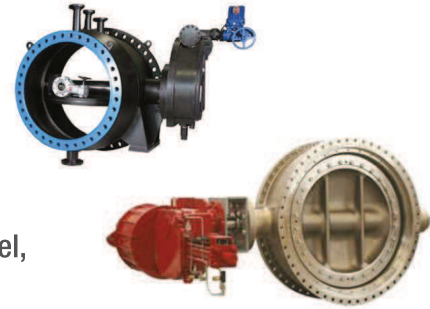
Butterfly valves

- = **Types:** Centred and single offset.
- = **Sizes:** From 1 1/4" to 138".
from DN32 to DN3000.
- = **Class:** From 150# to 300#.
from PN6 to PN100.
- = **Ends:** Wafer, lug, flanged.
- = **Materials:** Carbon steel, stainless steel and other alloys, (+).



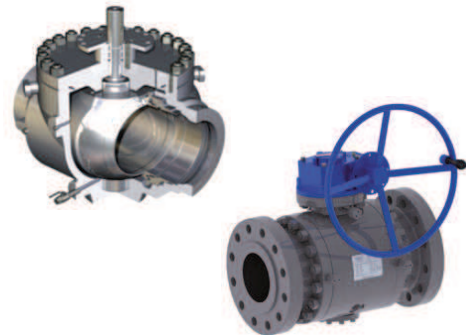
High Performance Butterfly valves

- = **Types:** Double and triple eccentricity.
- = **Sizes:** From 2" to 160".
from DN50 to DN2000.
- = **Class:** From 150# to 2.500#.
from PN10 to PN200.
- = **Construction:** Metal to metal closure, zero leakage, fire safe.
- = **Ends:** Wafer, lug, flanged and welded, (+).
- = **Materials:** Carbon steel, stainless steel, alloy steel, duplex, inconel, hastelloy, etc.



Trunnion Mounted Ball valves

- = **Type:** Side entry and Top entry.
- = **Sizes:** From 1" to 60".
from DN50 to DN200.
- = **Class:** From 150# to 2.500#.
from PN6 to PN400.
- = **Construction:** ASME B16.34, API 6D, ISO 17292;
soft and metal to metal seats; casted and forged body.
- = **Ends:** Flanged, welded, (+).
- = **Materials:** Carbon steel, stainless steel, alloy steel, bronze, duplex, superduplex, etc.



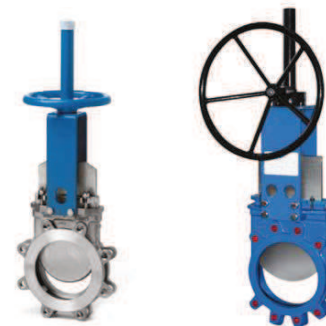
Floating Ball valves

- = **Sizes:** From 1/2" to 8".
from DN15 to DN300.
- = **Class:** From 150# to 600#.
from PN16 to PN40.
- = **Construction:** ASME B16.34, API 6D, API 608, BS 5351;
soft and metal-to-metal seats; forged and casted body.
- = **Ends:** Flanged, welded and threaded.
- = **Materials:** Carbon steel, stainless steel, alloy steel, bronze, brass, duplex, superduplex, etc.



Knife Gate valves

- = **Sizes:** From 2" to 36".
from DN50 to DN1200.
- = **Pressure:** From 150# to 900#
from PN6 to PN100
- = **Closure:** Soft and metal to metal.
- = **Ends:** EN 1092, ANSI B16.5, (+).
- = **Materials:** Cast iron, carbon steel, stainless steel, (+).
- = **Applications:** Water treatment services, mining, solid particles services, paper industry and other industrial processes.



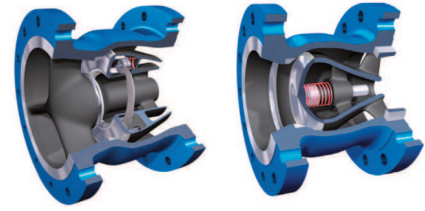
Dual Plate Check valves

- = **Sizes:** From 2" to 80".
from DN40 to DN1200.
- = **Class:** From 150# to 2.500#.
from PN10 to PN250.
- = **Construction:** Soft seat and metal to metal seat, casted and forged body.
- = **Ends:** Wafer, lug, hub, flanged and welded.
- = **Materials:** Carbon steel, stainless steel, cast iron, (+).



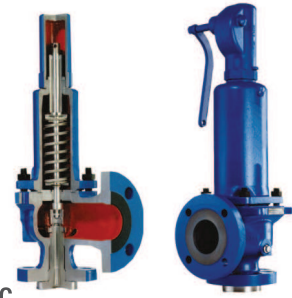
Nozzle Check valves

- = **Sizes:** From 1" to 88".
from DN25 to DN2200.
- = **Class:** From 150# to 2.500#.
from PN16 to PN400.
- = **Ends:** Wafer, lug, hub, flanged, welded and threaded.
- = **Construction:** Non-slam, soft and metal to metal seats, fire safe, forged and casted body.
- = **Materials:** Carbon steel, stainless steel, cast iron, (+).



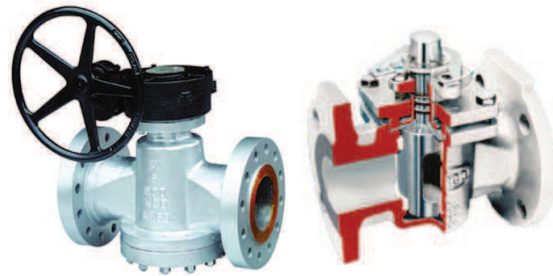
Safety / Pressure Relief valves

- = **Sizes:** From ½" to 20".
from DN15 to DN500.
- = **Class:** From 150# to 2.500#.
from PN16 to PN200.
- = **Ends:** Flanged, welded, threaded.
- = **Construction:** Forged and casted body.
- = **Materials:** Carbon steel, stainless steel, cast iron, (+).
- = **Applications:** Steam, gases, vapours and liquids. Cryogenic services.
- = **Options:** Open bonnet, soft seat, bellow, lifting device, sealed packing lever, etc.



Plug valves

- = **Type:** Lubricated and non-lubricated plug valves.
- = **Sizes:** From ½" to 36".
from DN15 to DN500.
- = **Class:** From 150# to 2.500#.
from PN16 to PN40.
- = **Ends:** Flanged, welded and threaded.
- = **Materials:** Carbon steel, stainless steel, alloy steel, cast iron and other alloys, duplex, superduplex, (+).



Double block & bleed (DBB) plug valves

- = **Type:** Double expanding plug valve.
- = **Sizes:** From 2" to 36".
- = **Class:** From 150# to 600#.
- = **Construction:** Full or reduced bore, fire safe. It allows in-line maintenance.
- = Zero leakage.
- = **Ends:** Flanged.
- = **Materials:** Carbon steel and alloy steel, (+).
- = This valve has emerged as the industry standard for movement and storage of petroleum products in refineries, tank farms and terminals.



Diaphragm valves

- = **Size:** From ¼" to 12"
from DN 15 to DN 300.
- = **Pressure:** max. permissible pressure 16 bar.
- = **Temperature:** max. permissible temperature 160°C.
- = **Ends:** Flanges, welded BW and SW, the screwed.
- = **Materials:** Cast Iron and Ductile Iron, Stainless Steel, Bronze, (+).
- = **Lining:** Ebonite, Butyl, PTFE/TFM, Polyamide, Halar (ECTFE)
- = **Diaphragm:** EPDM, Nitrile, Butyl, TFM, CSM (Viton)
- = **Applications:** Chemical Industry, mining, water treatments, Paper and cellulose industry, Sugar Industry, Acids and Alkaline Fluids, Chlorine Processes, etc.



Pinch valves

- = **Sizes:** From 2" to 20".
from DN50 to DN500.
- = **Pressure:** From 10 Bar to 200 Bar.
- = **Construction:** ASTM A536 60-40-18, BS2789 420-12, SABS936 SG42, DIN1693 GGG40. Open and close frame.
- = **Temperature:** Up to 120°C.
- = **Operation:** Hand wheel, gearbox and actuator (electric, pneumatic or hydraulic).
- = **Applications:** These valves are designed to handle abrasive and corrosive fluids, in high and low pressure, such as minerals, ash, pulp, chemical products, etc.



Control valves

- = **Type:** Globe control valve, (+).
- = **Sizes:** From ½" to 42".
from DN15 to DN400.
- = **Class:** From 150# to 4.500#.
from PN16 to PN200.
- = **Construction:** Casted and forged body.
- = **Materials:** Carbon steel, stainless steel, alloy steel, cast iron, duplex, special alloys, (+).



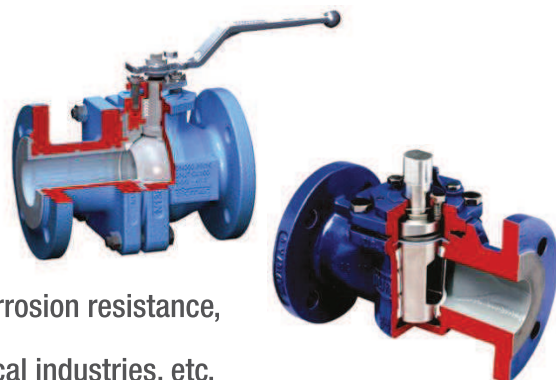
On-Off valves

- = **Type:** Ball, Gate, Globe, Butterfly, Plug, Knife, ...
- = **Sizes:** From ½" to 80".
from DN15 to DN2000.
- = **Class:** From 150# to 4.500#.
from PN16 to PN200.
- = **Construction:** Casted and forged body.
- = **Actuators:** Multiturn and quarter turn electric actuators, pneumatic actuators (rack & pinion, scotch yoke), hydraulic actuators, gas over oil actuators.
- = **Extras:** Additional equipments can be supplied as actuator passive fire protection, local control panel, air tank and so on.
- = **Materials:** Carbon steel, stainless steel, alloy steel, cast iron, duplex, superduplex, exotic alloys, (+).



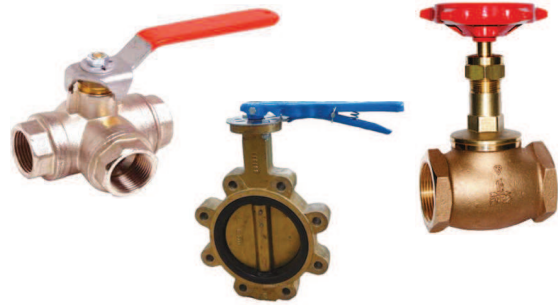
Lined valves

- = **Types:** Ball, Plug, Check, Butterfly.
- = **Sizes:** From ½" to 12".
from DN10 to DN500.
- = **Class:** From 150# to 300#.
from PN16 to PN25.
- = **Construction:** Internally lined valves with PFA, FEP, PP, PTFE, etc. Internal line can cover all wetted parts of the valve.
- = **Advantages:** Lower operating torques, zero leakage, corrosion resistance, prevention of fluid contamination.
- = **Applications:** Paper, cosmetics, pharmaceutical, chemical industries, etc.



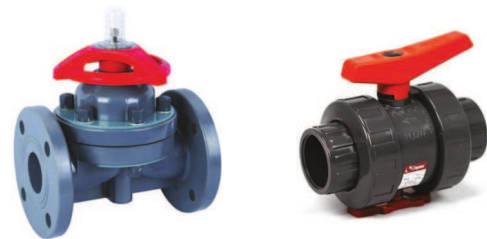
Bronze and Brass valves

- = **Type:** Ball, Gate, Globe, Check, Butterfly, Plug, Needle, Filters,...
- = **Sizes:** From ½" to 24".
from DN8 to DN600.
- = **Class:** From 150# to 300#.
from PN10 to PN40.
- = **Ends:** Flanged, threaded, wafer, lug, welded.
- = **Applications:** Water distribution, cooling and heating, wastewater, sanitary, compressed air, etc.



Thermoplastic valves

- = **Type:** Ball, Diaphragm, Butterfly, Check, Vent and Bleed, Pressure regulation, Filters, Angle valves, etc.
- = **Sizes:** From DN10 to DN300.
- = **Class:** From PN8 to PN16.
- = **Ends:** Flanged, welded, threaded, lug, wafer.
- = **Materials:** PVC, polypropylene, ABS, PVDF, etc.
- = **Applications:** Water works and sea water, industry, chemical processes, mining, gas distribution, etc.



Pressure Seal valves

- = **Type:** Gate, Globe and Check.
- = **Sizes:** From 2" to 48".
- = **Class:** From 900# to 2.500#.
- = **Design:** ASME B16.34, EN 12516, etc.
- = **Ends:** Flanged and butt weld.
- = **Materials:** Carbon steel, stainless steel, alloy steel, duplex, super duplex, exotic alloys, (+).
- = Recommended for high pressure applications.



Valves for HF Alkylation

- = **Type:** Gate, Globe and Check.
- = **Sizes:** From ½" to 36".
- = **Class:** From 150# to 800#.
- = **Construction:** API 600 and 602, fire safe design, low emissions according to API 622 and ISO 15848, acid detecting paint.
- = **Materials:** Carbon steel and monel, forged and casted.



Instrumentation valves and Manifolds

- = **Type:** Ball, Needle, Relief, Check, Plug, Manifolds, etc.
- = **Sizes:** From 1/8" to 2".
- = **Pressure:** From 1000 psi to 60.000 psi.
- = **Ends:** Threaded, flanged, quick connections, welded.
- = **Materials:** Stainless steel.



Cryogenic valves

- = **Type:** Ball, Gate, Globe, Check, Butterfly, Control, etc.
- = **Size:** From 1" to 48".
from DN15 to DN500.
- = **Class:** From 150# to 900#.
from PN16 to PN40.
- = **Temperature:** From -196°C to +200°C
- = **Ends:** Flanged, welded, (+).
- = **Materials:** Stainless steel, (+).
- = **Applications:** Very low temperature services, cryogenic, LNG, etc.



VALVES

Industrial Supply, consistently supplies the hard-to-find valves to keep your project moving forward.

NEC maintains a complete line of manual valves, valve automation and specialized products in commodity and specialty materials, ranging from low to high pressure applications. For your valve needs, NEC is a trusted resource to the chemical, power, oilfield, petrochemical, pulp & paper, refining, power, and water treatment industries.



Valve Products:

Cast Steel Valves

Gates, Globes & Checks
1-1/2" – 42" 150# - 1500#

Forged Steel Valves

Gates, Globes & Checks
1/4" – 2" 150# - 2500#

Cast Iron Valves

Gates, Globes & Checks
2" – 36" 125# - 250#

Bronze Valves

Gates, Globes, Checks & Angle
1/8" – 4" 125# - 300#

Ball Valves

Cast/Iron Steel, Stainless, Nickel Alloys & Chrome Moly
1/4" – 12" 150# - 3000#

Wafer Checks

Cast Steel, Iron, Stainless
2" – 24" 125# - 1500#

Butterfly Valves

Cast Steel, Ductile Iron
2" – 24" 150# - 3000#

Plug Valves

Cast Steel, Cast Iron
1/2" – 30" 175# - 1500#

Stainless/Alloy/Chrome

Cast & Forged Gates, Globes, Checks
1/2" – 8" 150# - 800#

Additional Valves

Needle, Piston

Strainers

Cast, Stainless, Bronze, Iron
1/4" – 24" 150# - 3000#

Chainwheel Operators

Conventional & Hammer Type
2" – 24"

Valve Automation

Pneumatic & Electric,
Customized per your requirements

Valve Brands:

- | | | | | |
|-------------|---------|-------------|-----------------|----------|
| • Apollo | • Kitz | • Victaulic | • Cooper | • Smith |
| • Balon | • Orbit | • Crane | • Milwaukee | • Bonney |
| • Bray | • PBV | • Ty | • Durco | • Nibco |
| • Jamesbury | • Velan | • PK | • Tufline/Xomox | • OMB |
| • KF | • Dixon | • Vogt | • Walworth | |



NEC

The Best Desingned Solutions
ELECTROMECHANİC

www.necelektromekanik.com

nec@necelektromekanik.com

+90 530 524 26 00

Temperature Transmitter
Sight Glasses
O-Rings
Quick Closing Valves
Seals
Butterfly Valves
Air Vent / Air Pipe Head
Check Valves
Metal Gaskets
Surface Valves
Ball Valves
fittings & Flanges
Flowmeters
X-Rings
Gas Detection
Pressure Transmitter
Overboard Valves
Valves
Level Gauges
xylan coatings
fasteners
pumps
ptfe, pvdf, pp, pe pipe
ptfa -ptfe valve
Mudboxes
Instruments
Safety Valves
Service
Storm Valves
Gaskets
Actuators
Oil Seals
V-Rings
Calibration
Bellows/Expansion/Flexible Joint
Sounding Cocks
Braided Packings
Self-closing Valves
Diaphragm Valves
Gate Valves
Fire Hose Valves
Globe Valves – S.D.N.R
Fiber Gaskets

NEC ELEKTROMEKANİK